



BuddyWing User Manual

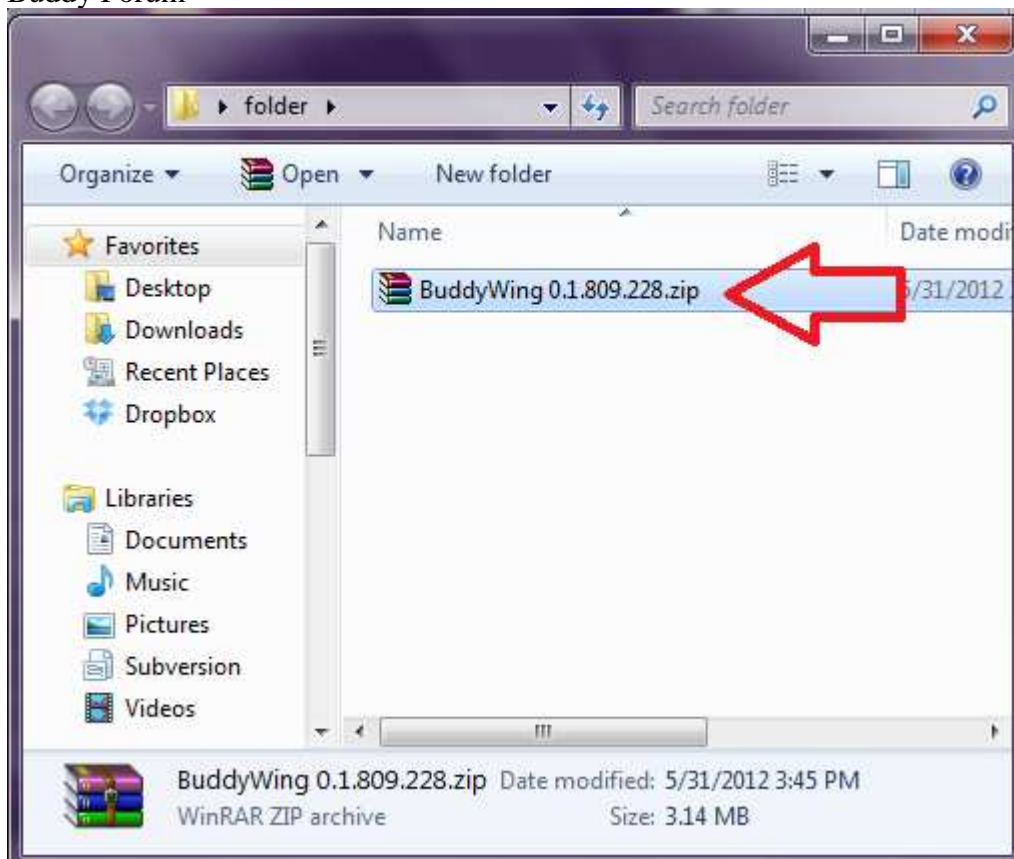
Getting Started

Before we start we need to make sure you have the following

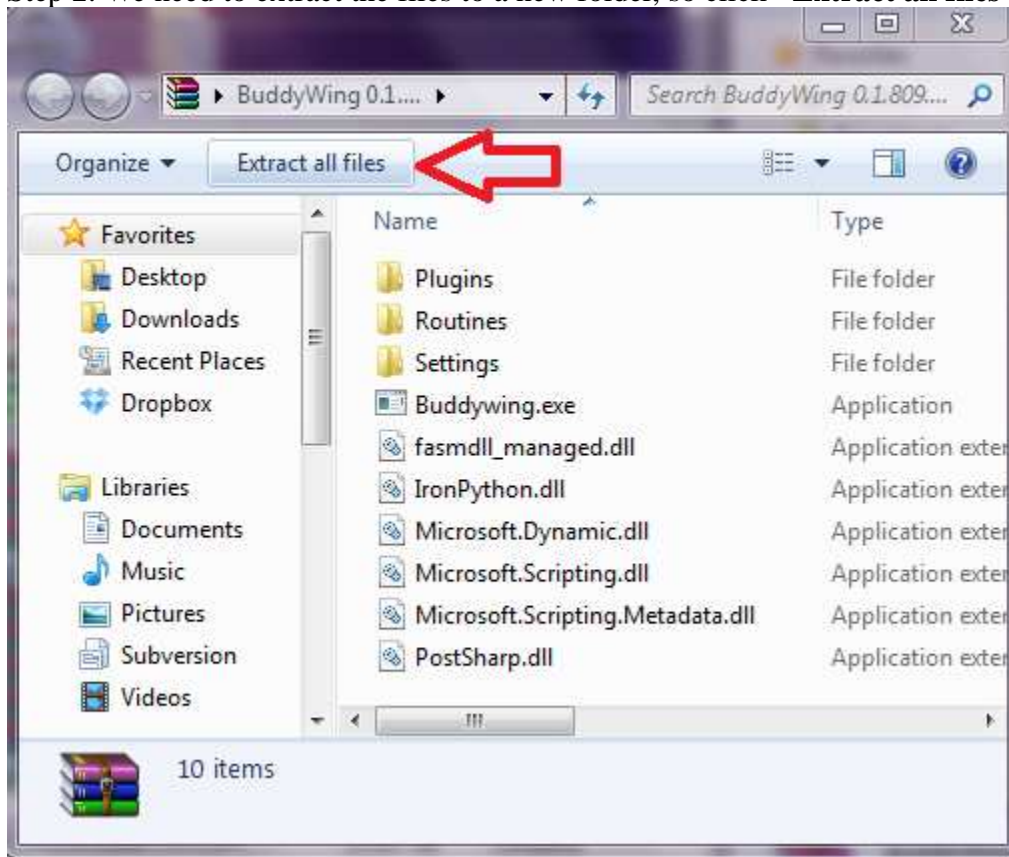
1. SWTOR fully installed and updated to connect to live servers.
2. Microsoft .NET Framework 4 - <http://www.microsoft.com/en-us/download/details.aspx?id=17851>
3. Microsoft Visual C++ 2010 Redistributable Package - <http://www.microsoft.com/en-us/download/details.aspx?id=5555>
4. BuddyWing Release Package - The Latest Version can always be found at <http://www.thebuddyforum.com/releases/>

Once you have the following completed, we need to open up the BuddyWing Release package we got off the release thread at <http://www.thebuddyforum.com/releases/> the package is a ZIP file, we need to extract the contents of the zip file to a new folder.

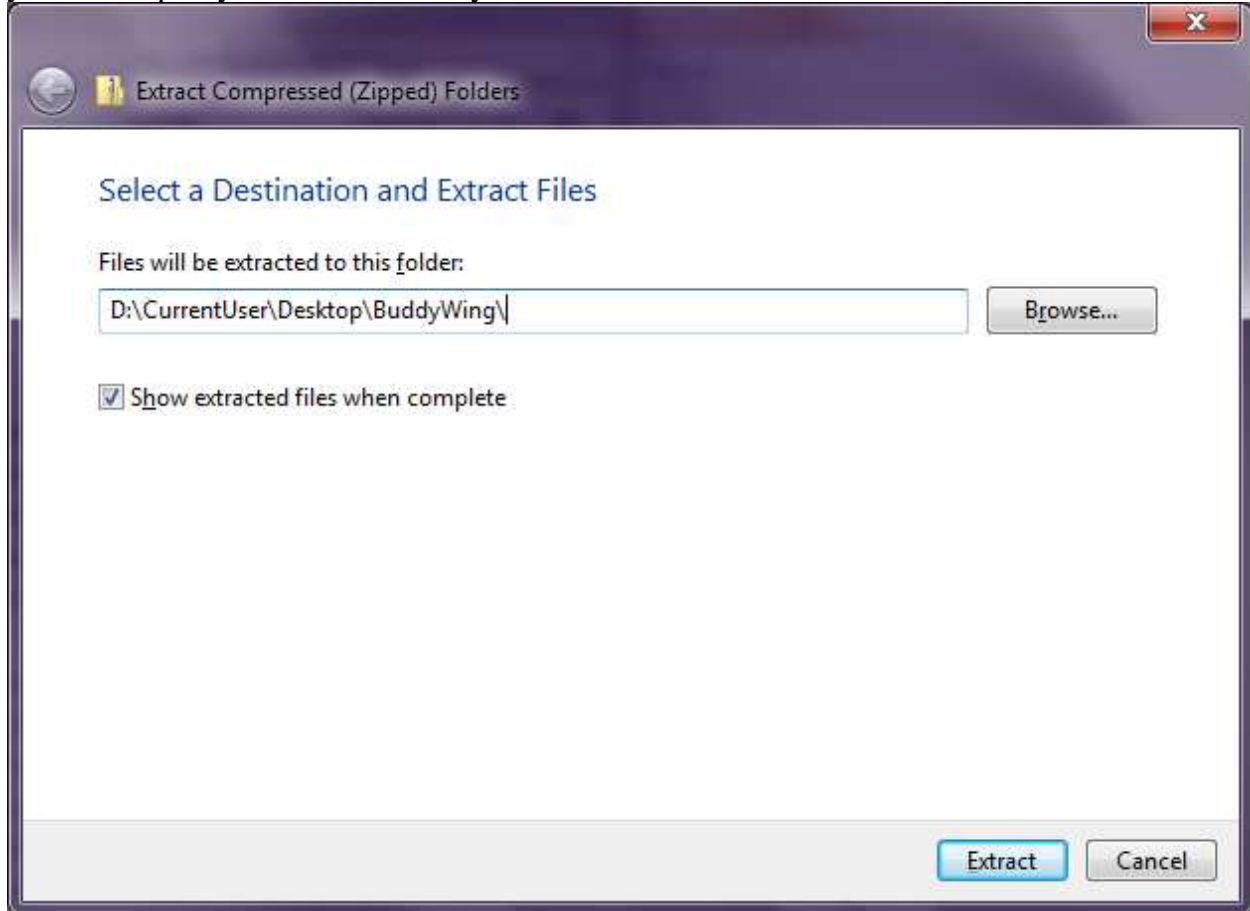
Step 1: Click on your **BuddyWing.Zip** file you downloaded from the releases section of The Buddy Forum



Step 2: We need to extract the files to a new folder, so click **"Extract all files"**



Step 3: We need to tell it where to extract to. i suggest extracting the files to a New Folder on your desktop so you can find it easily.



You have Successfully completed extracting BuddyWing. You are now ready to move on to the next section.

Starting BuddyWing.

To start buddywing we you **MUST** set your SWTOR (Starwars: the old Republic) game client to **English** to change it to **English** or make sure it's already set. in the **Launcher** in the lower left hand corner click the **Gear Icon** to take you into the settings. make sure **English** is selected in the dropdown and press **Save**.

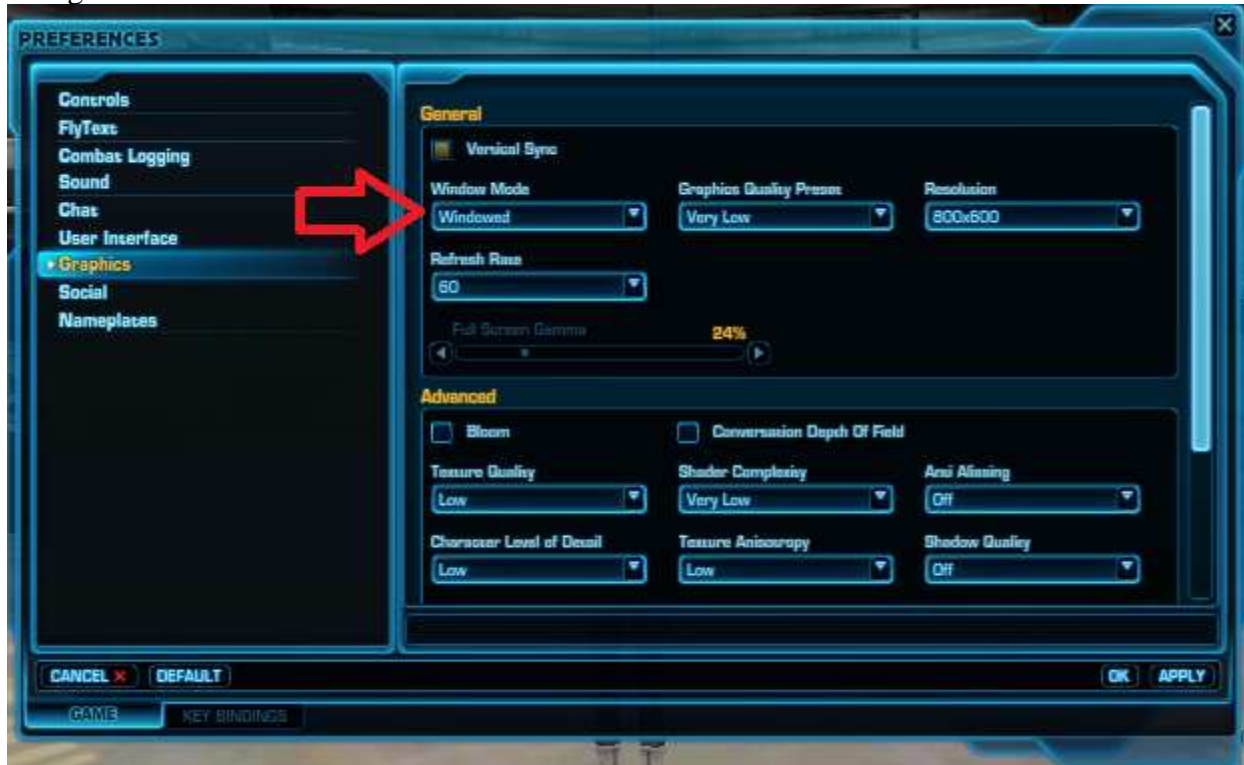


Once that's complete, Log into the game like normal, and select the Character you wish to use BuddyWing With.

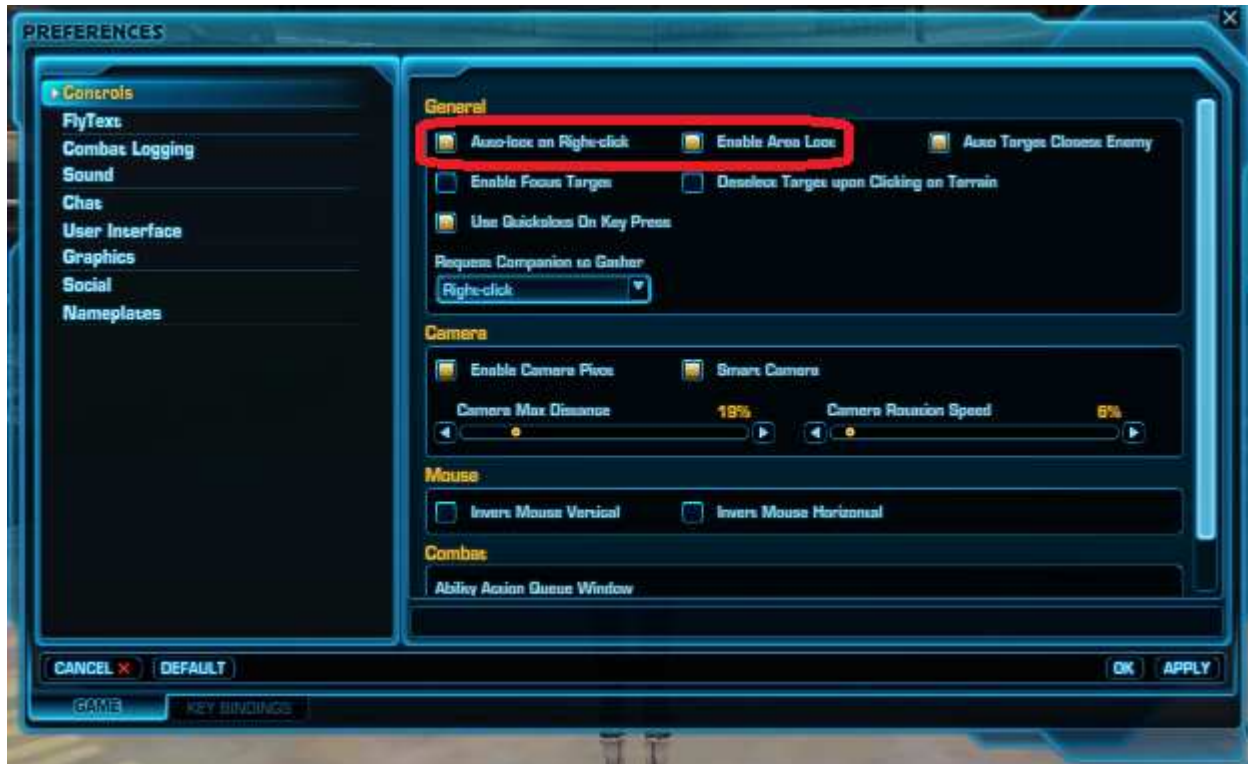
Now that we are completely in game, we need to press Escape (Esc) and go into Preferences on the Left Hand Side Select Graphics

We need to Change "Window Mode" to "Windowed" at this time you may also wish to lower your graphics settings and your resolution if you plan to use BuddyWing while using your computer for other tasks Lowering the Graphics Settings and Resolution will Free up system resources.

Once thats Done, Do NOT close out of your Preferences Window, there's more that needs to be changed.



On the Left Hand Side Click "Controls", and Make sure "Auto-loot on Right-click" and "Enable Area Loot" are both checked. if they aren't, then Check them now. Press OK to close out of the Preferences Window.



Starting BuddyWing.

With the game still running and fully logged in. Start **BuddyWing.exe** by Double Clicking on it.



Once the Program is started you be asked to Login with your **Key**. Your Key should be a 20 Character Long Alpha Numeric String, that was **E-mailed** to you after you **Purchased BuddyWing**. If you have your Key, Copy and Paste it Into the Login Box and **Click Login**, if you Didn't get your Key after buying, then Send an e-mail to support@thebuddyforum.com with your transaction ID.



Congratulations, if you made it this far that means you're almost ready to start botting. Next we will go over the buttons you need to know and what they do.



RED

- Starts and Stops the bot.

BLUE

- Lets you Load an XML Profile ether from Disk or From Web
- The Dropdown Contains a List of the last 5 profiles used.
- BuddyWing needs a profile to function.

GREEN

- Contains Options to Change Current settings of the bot.
- Current Combat Routine - Combat Routines tell the bot how to behave in combat.
- Current Mount Name - If you have a mount you can define the name here, or have it Automatically pick the right one to use.
- Sell Item Quality - Change what kind of items are sold, By default it is set to Standard = White Items
- Most of the time you Do Not need to change settings in this tab.

ORANGE

- Contains Buttons used for information gathering - This tab is only useful for making your own profiles.

PURPLE

- Has a list of currently loaded plugin's by default BuddyWing ships with "Auto-Equip"
- Auto-Equip automatically equips new gear to your character as its acquired.
- You can Enable or Disable the plugins in this Tab.

PINK

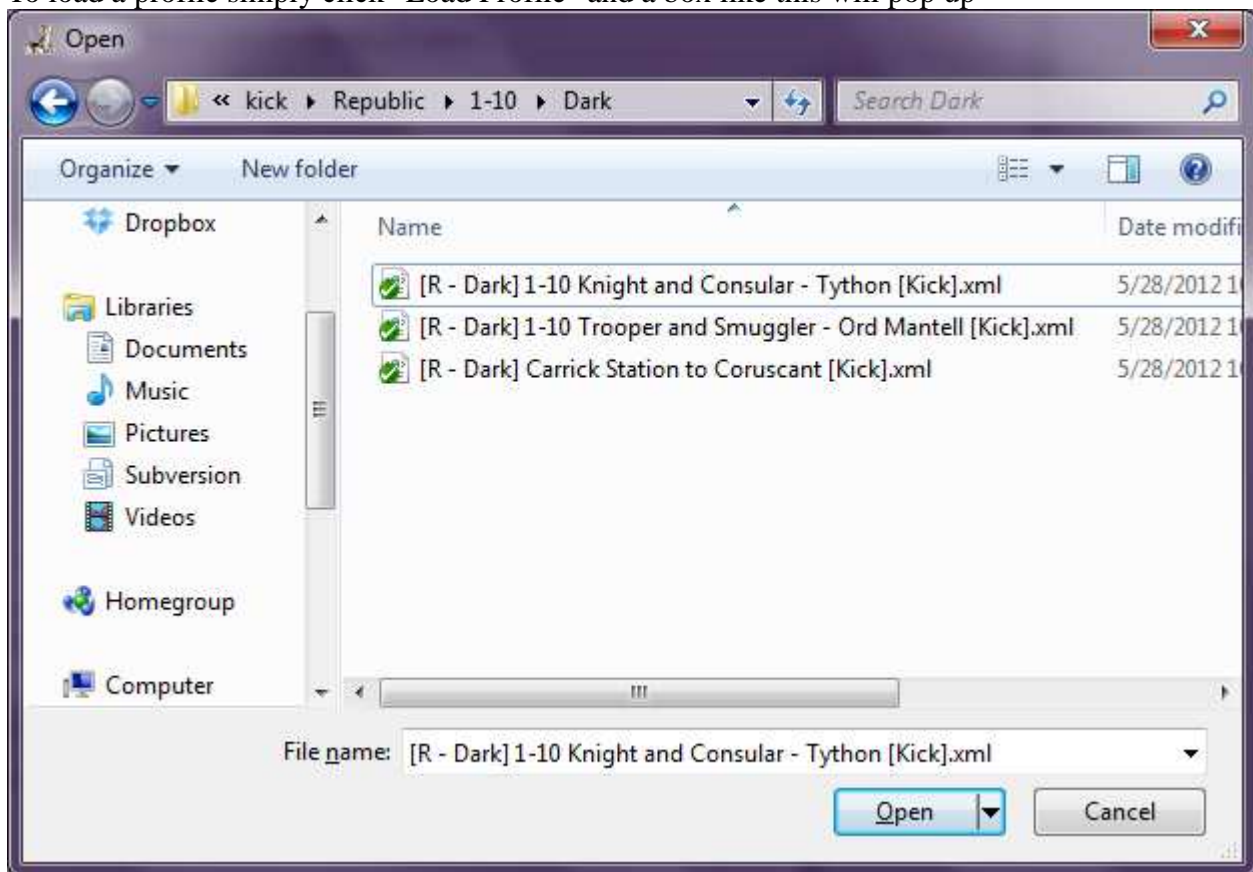
- Displays a "Log" of Current Activity While the bot is running.

GOLD

- Displays what the current Point of Interest (PoI) that the bot is trying to accomplish.

Loading a Profile

To load a profile simply click "Load Profile" and a box like this will pop up



To load a profile simply browse to your BuddyWing directory and then go into the Profiles Folder, from there find the profile best suited for your needs, and Open it.

Then you can press "Start" on the bot and your character should start moving momentarily to complete the items in the profile.



Congratulations your now botting your character using BuddyWing!

Having Problems?

Please visit us on the forums at

<http://www.thebuddyforum.com/buddy-wing-forum/>

or send an e-mail to

support@thebuddyforum.com